

DUDGELEY FARM ARRIVAL PACK

Dudgeley Farm, All Stretton, Near Church Stretton, Shropshire SY6 6LE.

Arrival & Parking

- Dudgeley Farm is conveniently located just off the A49, near Church Stretton. ● To ensure ample parking and smooth unloading, please plan your arrival for no earlier than 13:00 PM.
- The farmhouse accommodations will be ready for you from 16:00 onwards. ● For those using GPS or navigation apps, the What3Words address for the farm is: feared.clan.flamingo
- All vehicles are requested to park and unload in the designated arena car park, marked by the green line on the map. Please follow the green dotted line for directions.
- If you encounter any issues upon arrival or if I'm not present to greet you, feel free to reach me via text or phone at **07515 721963**.
- Generators are not allowed on site

Setting Up

- Bring your own corralling equipment and poo picking equipment, all muck to be put in a muck trailer on the yard.
- You also need an ID tag on your coral with your name, Horses name and your mobile number (your details inside a sandwich bag and taped onto your electric fence tape)
- Unless you have pre-booked stabling (located in the pink areas on the image below), please create your corral before unloading your horse.
- The **corralling** field (marked with an orange line) is located opposite the yard. A walkway from the parking area provides access. Water for your horses is available from the stable yard tap (pink T"). Please be aware of the public footpath along the top edge of the field, near the sycamore tree. When setting up your corral, leave space along the hedge line for walkers. Do not place your corral directly against the hedge. Please note that the corralling field may change due to weather conditions; you will be informed of any changes.
- When setting up corrals, ensure they are at least 20 meters away from the gate and within the designated orange line on the map. Please note that the corralling field may be subject to change due to weather conditions, and I will inform you of any adjustments if necessary.
- To make the setup process easier, I recommend bringing a wheelbarrow or trolley to transport your fencing equipment and other supplies.
- For your convenience and safety, please use the path next to the road (marked by the orange dotted route) when walking or leading horses.
- For **stable** bookings, you can proceed directly to your assigned stable (pink line) after unloading your horse.
- There is no tack room.

Horse Accommodation

- Please ensure your corrals are regularly poo-picked, and all muck is deposited in the muck trailer located in the yard.
- For those who have pre-booked stabling (pink line), your horse's stay includes half a bale of hay per night and dust-free bedding, such as hemp, wood pellets, or shavings. ● Upon your departure, please ensure the bedding is swept back and all droppings and wet are removed from the stable, unless it's a deep litter bed, in which case only droppings and excess wet patches need to be removed.
- If you are the last one to leave the stables at night, please turn off the stable lights and yard lights (controlled by two switches inside) when you leave. The stables and yard should be vacated

by 21:00, at which time the gates will be locked. The yard will be unlocked around 7:30 • An outside toilet is available on the yard (pink "B").

• Please dispose of all waste and recycling in the designated bins (pink "W"). • As this is a livery yard, I kindly request that you respect the needs and routines of those who are permanently based here.

(W) All waste/recycling in the bins,

(B) Toilet

(T) Water Tap

Green - Parking

Orange - Corralling (this is subject to weather conditions)

Pink - Stables Purple - Farmhouse



Training & Riding

- All ridden and groundwork training sessions will be conducted in the 60m x 40m sand arena, marked by the blue line on the map. Please meet your trainer at the arena.
- The training schedule will be emailed to you before your arrival. I suggest you print a copy to bring with you
- Please note that riding out is not part of the training program and is undertaken at your own risk. I advise you to pair up with compatible horses and riders for safety. Before heading out, please send me a message indicating where you are going, your expected return time and who you are riding with.
- There will be an OS map with some routes I have ridden from Dudgeley Farm available. You can purchase [OS Map of The Long Mynd & Wenlock Edge: Explorer 217](#) which covers this area. • I recommend using the Equilab app on your mobile and adding me as a safety contact during your rides.
- For added safety, you will be provided with a Horse ID to attach to your saddle and a rider wristband with an emergency contact number to wear during your stay.

Meals & Farmhouse Amenities

- Breakfast is self-service, with options based on your selections from the menu options form. Chilled breakfast items can be found in the small fridge by the kettle in the kitchen. ● Professionally prepared hot main meals and puddings will be served in the dining kitchen around 19:30. Your food orders have already been submitted.
- Tea, coffee, and soft drinks are provided. You are welcome to bring your own alcoholic beverages.
- The farmhouse is equipped with a microwave and dishwasher for your convenience. Please be considerate and take turns loading and emptying the dishwasher and washing up any items that don't go in the dishwasher.

House Rules & Considerations

- Access to the farmhouse is **exclusively** via the small gate on the right on the lane just past the yard through the garden and into the utility room. Please leave your outdoor shoes in the utility room and refrain from bringing any horse items into the house.
- Remember your slippers or house shoes, leave boots & wellies in the utility room.
- The door leading to the yard is locked for health and safety reasons.
- A shared fridge is located in the utility room for storing your food

and drinks. Please label all

items with your name to avoid any mix-ups.

- Towels and bedding are provided for those who have booked rooms.
- Out of respect for those who may retire early, please be mindful of noise levels in the lounge and bedrooms, especially in the evenings (note conversations can be heard in the bedrooms!)
- Wi-Fi is available for your use. Bear in mind this is a rural location so speeds may be slow. Password in on front of Guest Book in the inner hallway table.



Departure

- The house must be vacated by 10.00 and
- stables/corraling vacated by 12.00.
- Remove all droppings and wet from stables and sweep back all clean dry bedding.
- All droppings and hay to be removed from corrals.
- Once you have cleared your stable/corral you can go for a final hack before departing (time permitting), please let me know if you do this.

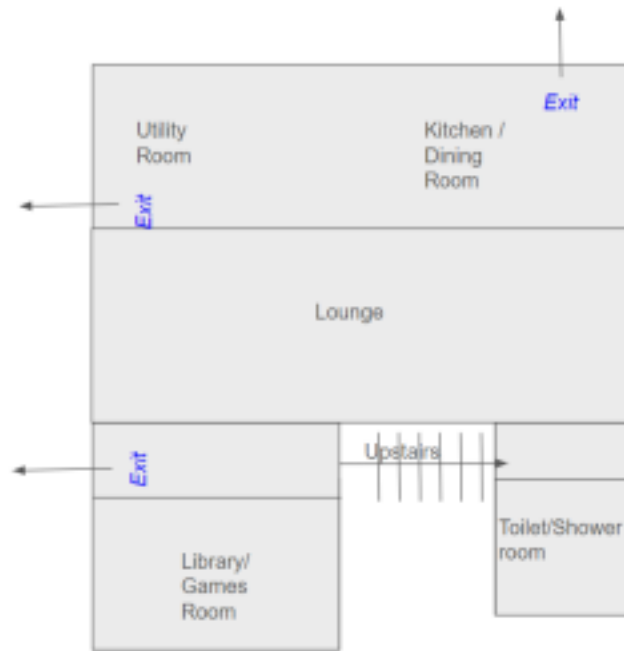
If you have any questions, please do email me.

Looking forward to welcoming you and your horse at Dudgeley Farm

Best wishes

Floor Plan (not to scale) Rooms allocated on arrival

Dudgeley Downstairs



Dudgeley Upstairs

